

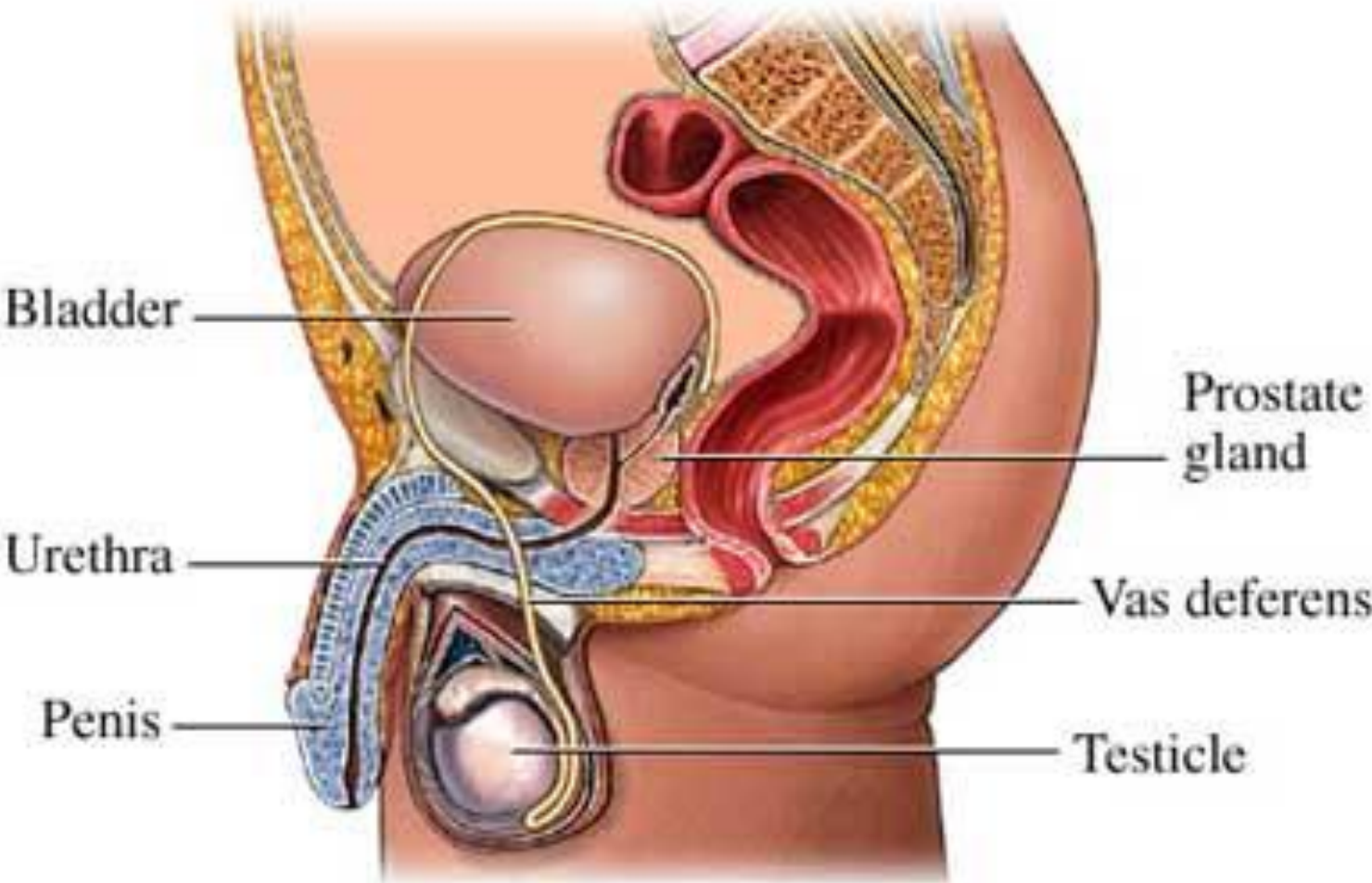


New Technology

Mr Barnaby Chappell
Consultant Urological Surgeon



- Template Biopsies
- Blue Light Cystoscopy

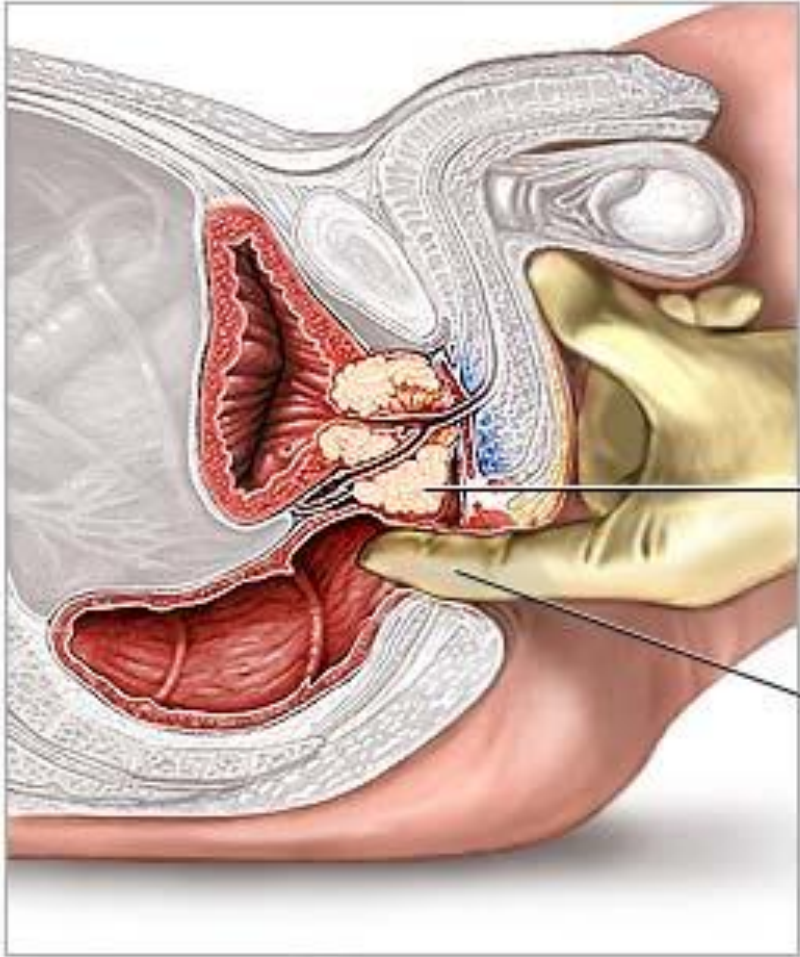






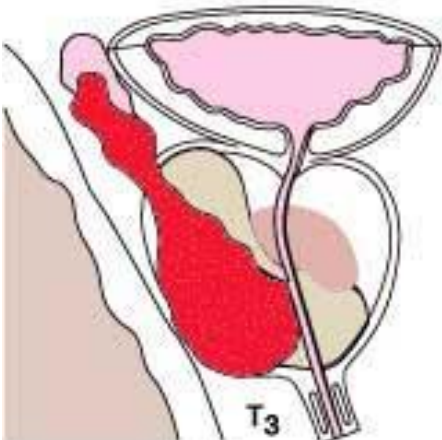
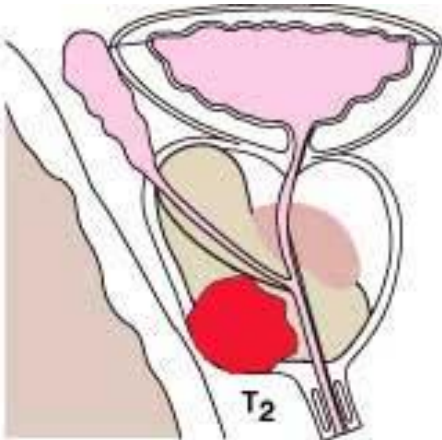
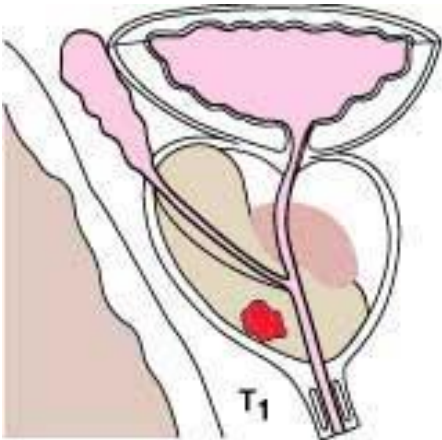
Age specific PSA ranges

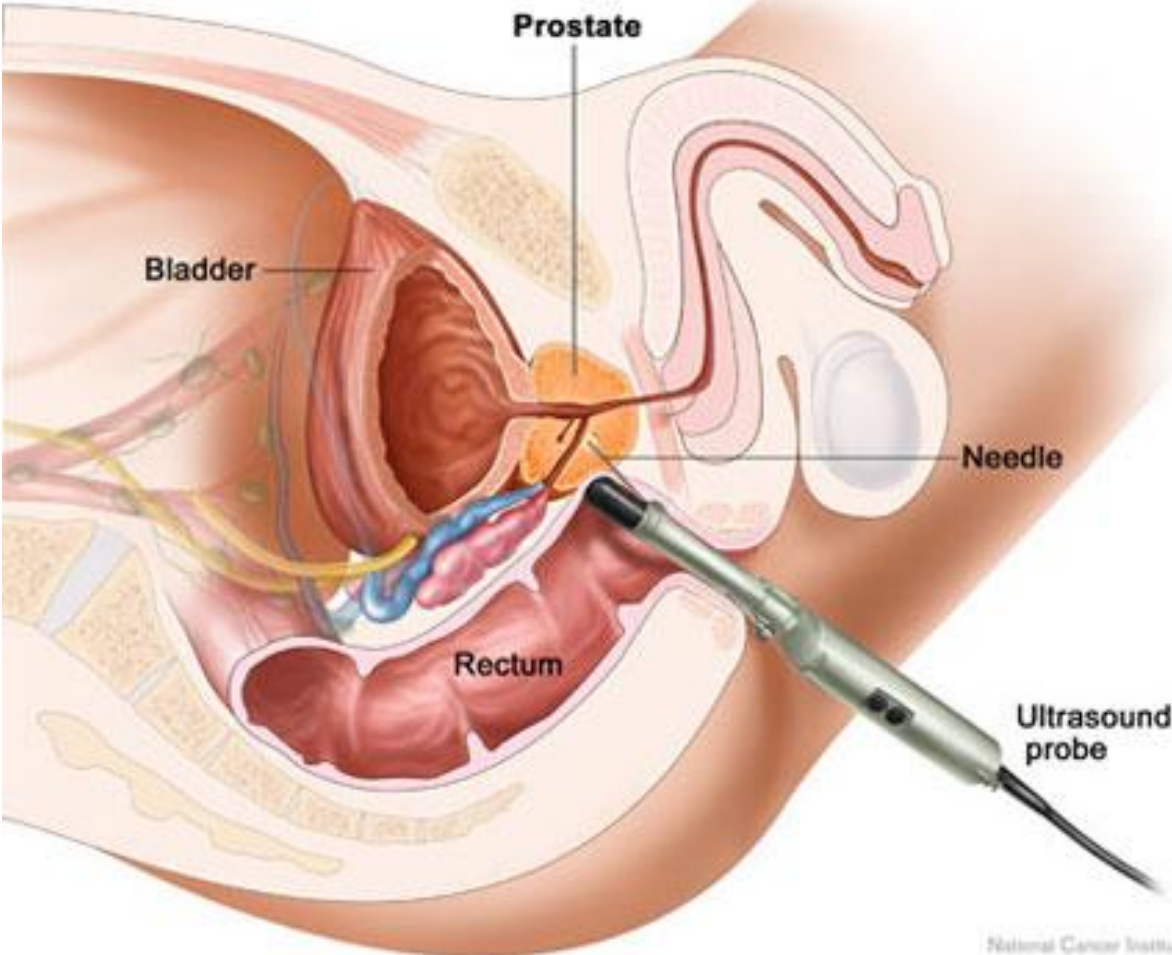
- 40 – 49 < 2.5
- 50 – 59 < 3.5
- 60 – 69 < 4.5
- 70 – 79 < 6.5



Prostate cancer

Digital rectal exam









Indications

- Elevated PSA with negative biopsies
- Pre Active Surveillance (AS)
- Repeat biopsy whilst on AS



Active surveillance

- Selection is key
- Failure rate
- Upstaging 30 -40% with template biopsy



- Standard of care in many hospitals
- Not available in Sussex on NHS
- Out of area referral
- Private service



Blue Light cystoscopy

- Hexvix
- Introduced preop
- 1 hour





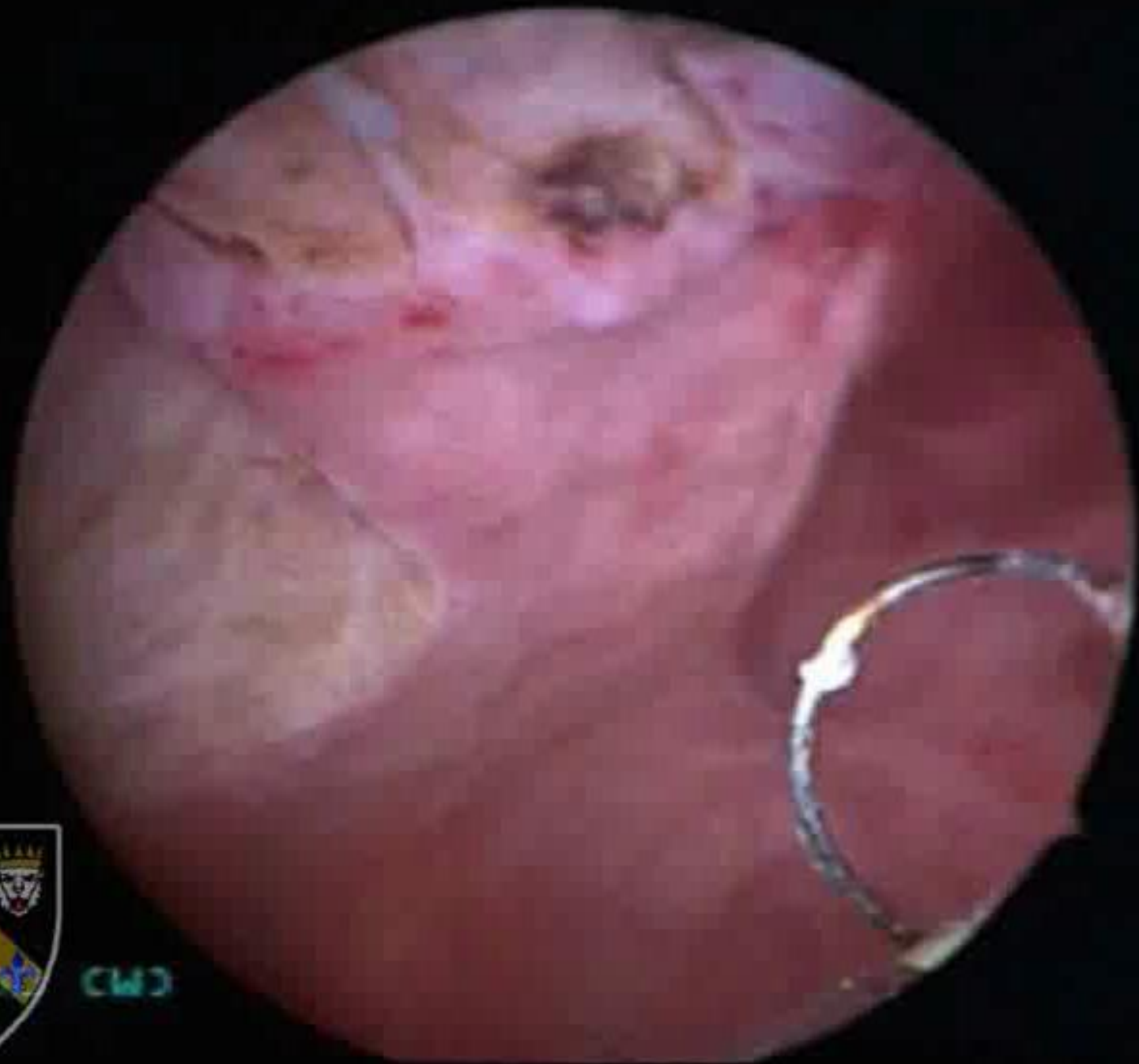
- High recurrence rate in superficial TCC
- Up to 85%
- True recurrence or missed primary tumours
- Tumour seeding?

PDD Blue

(C)







CMS



Indications

- Multifocal recurrence
- Recurrent CIS
- Atypical cytology